

# WESTERBEKE 7.0 KW MARINE GASOLINE GENERATOR

## A new, quiet, smooth running marine power-plant from Westerbeke

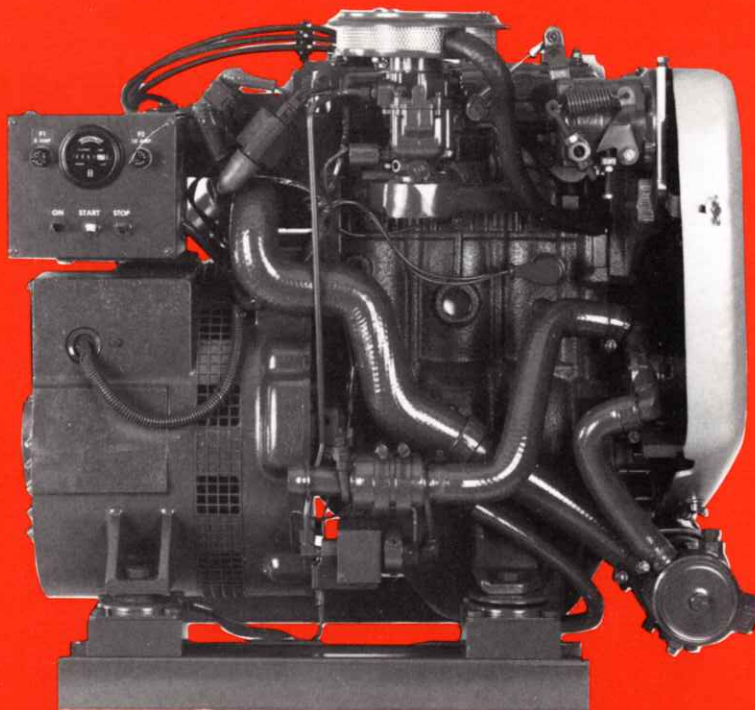
A small, reliable smooth running Generator Set for all your shipboard needs; electrical power at the turn of a switch for: Air Conditioning, Electric Cooking, Microwave Oven, Refrigeration, Cabin Appliances, Power Tools, and Navigation/Communication Equipment. Like all Westerbeke Generator Sets, it is fresh water cooled with an Engine mounted Heat Exchanger. The Engine and Generator are connected through special Drive Discs into a compact carefully aligned Generator Set. The complete unit is mounted on lightweight rails through soft flexible Isolator

Mounts that prevent the transfer of vibration. A lightweight removable Drip Tray is fitted under the unit between the mounting rails. The generator components meet the safety regulations of U.S. Coast Guard 33 CFR-183.

The Westerbeke 7.0 is lightweight, safe, dependable, durable and economical to operate. Designed to operate at a quiet 1800 RPM, the Westerbeke 7.0 offers 3 cylinder, 4 cycle smoothness to provide electrical conveniences usually found only on larger boats.

# WESTERBEKE 7.0 KW GASOLINE MARINE ENGINE GENERATOR SET

- SMOOTH AND QUIET THREE CYLINDER PERFORMANCE
- ENCLOSED FRESH WATER COOLING
- AUTOMATIC SAFETY SHUT-DOWNS
- SIMPLE ENGINE AND GENERATOR CONTROLS FOR RELIABILITY
- GASENSER - EXCLUSIVE ANTI-VAPOR LOCK FUEL SYSTEM



### STANDARD EQUIPMENT

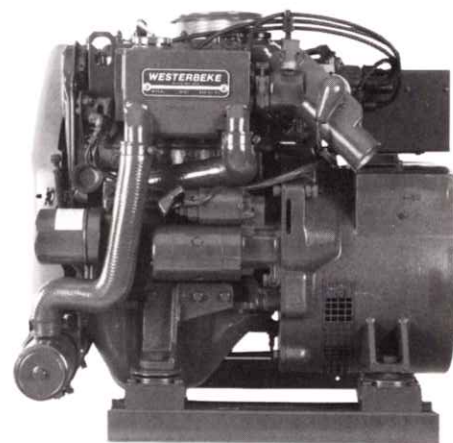
- Electric fuel lift pump
- Overspeed shutdown
- High water temperature shutdown
- Low oil pressure shutdown
- Lightweight mounting rails
- Vibration isolator mounts
- High exhaust temperature shutdown
- Belt guard
- Running time-meter
- Down draft carburetor
- Flame arrestor (USCG approved)
- Water injected elbow
- Coolant recovery tank
- Lube oil drain hose
- Operator's & parts manual
- Removable drip tray

### OPTIONAL EQUIPMENT

- Remote control panel
- Ship/shore transfer switch
- Technical manual
- Hydro-Hush exhaust silencer
- Remote engine instruments
- Spare parts kit



Remote Start-Stop Panel and Remote Instrument Panels are available as optional equipment.



The 7.0 K.W. features very compact dimensions and simplicity of design.



**GASOLINE GENERATORS: 4.5, 7.0, 8.5, 9.0, 12.5, 15, 20 kw's**

**Fresh Water Cooled Diesel and Gasoline Generators from Westerbeke.**

# WESTERBEKE 7.0 KW MARINE GASOLINE GENERATOR

**WESTERBEKE 7.0 KW**

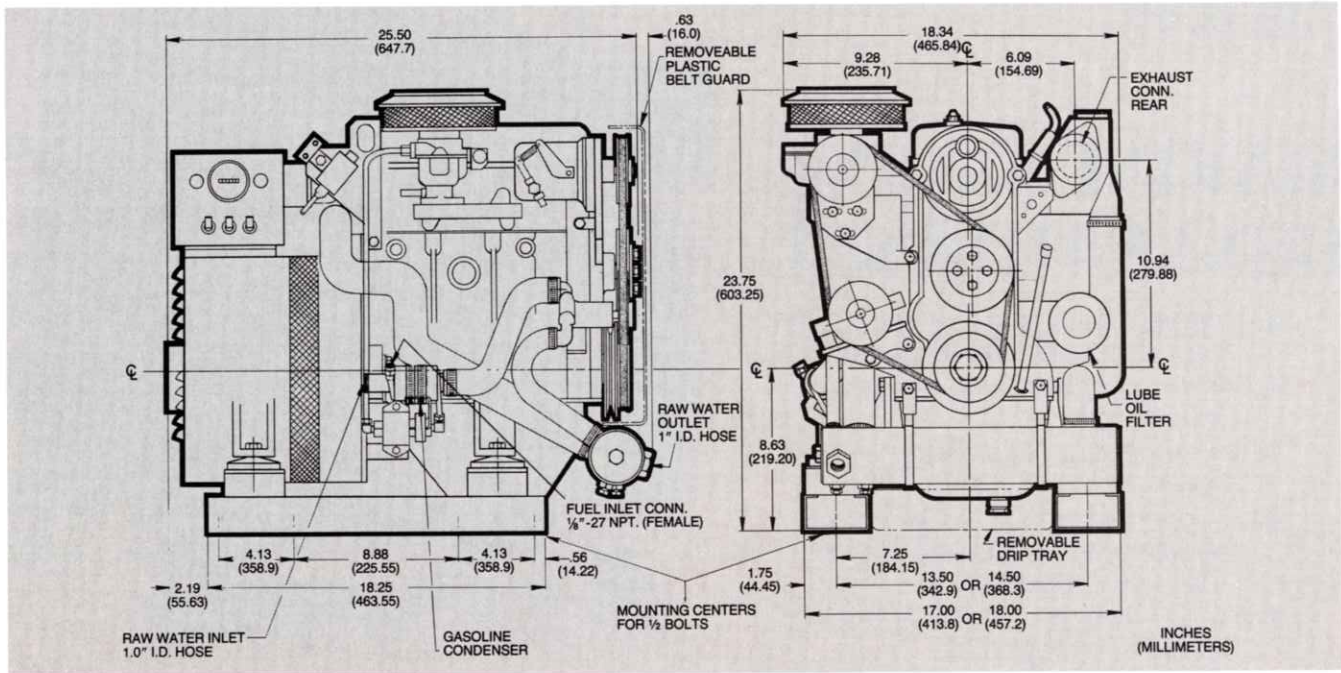
**DESIGN:** Brushless, four pole, revolving field, self regulating, pre-lubricated single bearing design.  
**VOLTAGE REGULATION:** Standard  $\pm 5\%$  no load to full load.  
**FREQUENCY REGULATION:** 3 Hertz (5%) no load to full load. (Generator is capable of operation at either 50 or 60 Hertz by simple adjustments.)

**INSULATION:** Class "F" as defined by NEMA MG1-1.65.  
**TEMPERATURE RISE:** Within NEMA MG1-22.40 definition when operating at full load.  
**COOLING:** Cast centrifugal blower, direct connected.  
**RADIO INTERFERENCE LEVEL:** Capacitors minimize interference within the limits of most marine applications.

MODEL	ELECTRICAL CHARACTERISTICS					RATING		ENGINE	
	Volts	Amps	Hertz	Phase	Wire	Power Factor	KW	RPM	START
BCG 7.0-614*	120*	58*	60	1	4	1.0	7.0	1800	Remote
BCG 5.0-514*	230	21.7	50	1	4	1.0	5.0	1500	Remote

\*Consult factory for 120/240 volt application.

\*Adjustable for 50 or 60 Hertz.



## A MODERN GASOLINE ENGINE

Power for the Westerbeke 7.0 KW Generator Set is provided by a modern three cylinder overhead cam gasoline engine that features high combustion efficiency, ultra low fuel consumption and vibration-free running.

- Engine type . . . . . 3 cylinder, 4 cycle
- Displacement . . . . . 51.6 cu. in.
- H.P. @ 1800 RPM . . . . . 15
- Compression ratio . . . . . 9.5:1
- Fuel . . . . . Gasoline
- Block . . . . . Cast iron
- Head . . . . . Aluminum
- Valve system . . . . . Single overhead cam belt driven
- Main bearings . . . . . Four
- Carburetor . . . . . Down draft type with U.S.C.G. approved flame arrest or
- Governor . . . . . Hoof, flyball type, 5% speed regulation

- Weight . . . . . 328 lbs.
- Starting motor . . . . . 12 volt negative ground
- Battery charging . . . . . 10 amps
- Cooling system . . . . . Fresh water through heat exchanger
- Full load fuel consumption . . . . . Approx. 1.2 G.P.H.

Call your Westerbeke representative

or contact the

Specifications May Change without Notice.



AVON INDUSTRIAL PARK, AVON, MA 02322 • TEL: (508) 588-7700  
 FAX: (508) 559-9323 • CABLE: WESTCORP